



## COMMERCIO PRODOTTI **SIDERURGICI**

TUBOLARI DI FORMA

TRAVI

LAMIERE

LAMINATI

PROFILATI

LAMIERE IN POLIURETANO E POLICARBONATO

GRIGLIATI GREZZI E ZINCATI

RETE ONDULATA ED ELETTRISALDATA

LAMIERE GRECATE ZINCATE COPERTURA E SOLAIO

TONDO E RETE ELETTRISALDATA PER CEMENTO ARMATO

BARRE IN METALLO

RETE E PALETTI PER RECINZIONE

FERRO BATTUTO

FERRAMENTA ED ACCESSORI

LAMIERE E TUBOLARI INOX

LAMIERE IN ALLUMINIO, VERNICIATE E PELLICOLATE

LAMIERE FORATE

LAMIERE STIRATE

INFISSI IN PVC

ZANZARIERE E AVVOLGIBILI

### CONTATTI

TEL. 06 8391 4531 – WHATSAPP +39 338 889 3201

E-MAIL: [INFO@WRGROUP.IT](mailto:INFO@WRGROUP.IT)

N. REA RM 1582898 -

P.IVA E C.F. 15319441000

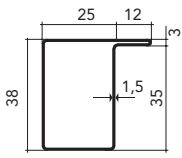
SEDE E MAGAZZINO

VIA DEI PAPIRI, SNC - 00134 ROMA (RM)

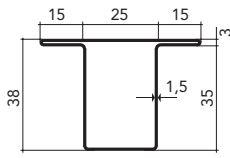
[www.wrgroup.it](http://www.wrgroup.it)

# TUBI SERRAMENTI E MANCORRENTI

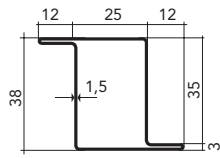
www.wrgroup.it e-mail:info@wrgroup.it www.instagram.com/wrgroup\_srl



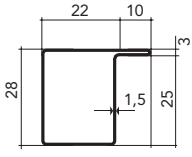
**1A (T. 873) -55%**  
 SPESSORE (mm) **1,5**  
 Kg/m **1,72**



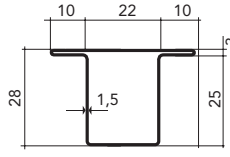
**1B (T. 572) -55%**  
 SPESSORE (mm) **1,5**  
 Kg/m **2,10**



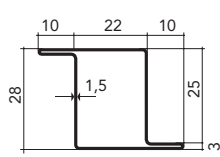
**1C (T. 573) -55%**  
 SPESSORE (mm) **1,5**  
 Kg/m **1,99**



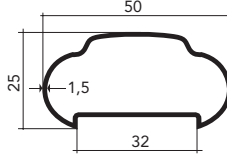
**11A (T. 668) -65%**  
 SPESSORE (mm) **1,5**  
 Kg/m **1,34**



**11B (T. 658) -65%**  
 SPESSORE (mm) **1,5**  
 Kg/m **1,57**

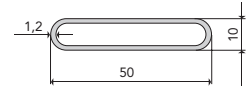


**11C (T. 667) -55%**  
 SPESSORE (mm) **1,5**  
 Kg/m **1,57**

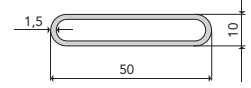


**MT9 Handrail (T. 1313) -60%**  
 SPESSORE (mm) **1,5**  
 Kg/m **1,6**

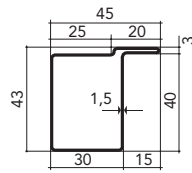
## OVALE 50 x 10



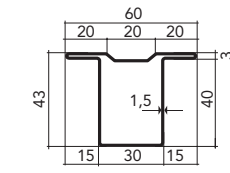
Peso kg/ml: 0,98



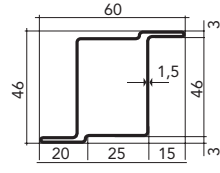
Peso kg/ml: 1,27



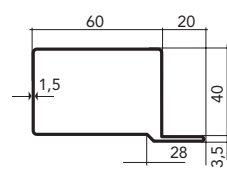
**15A (T. 625) -45%**  
 SPESSORE (mm) **1,5**  
 Kg/m **2,04**



**15T (T. 626) -40%**  
 SPESSORE (mm) **1,5**  
 Kg/m **2,45**

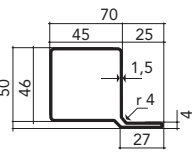
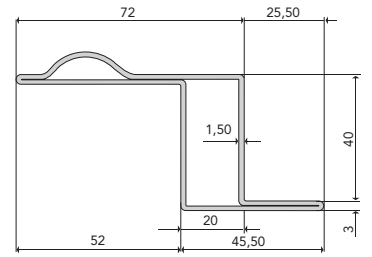


**15Z (T. 635) -45%**  
 SPESSORE (mm) **1,5**  
 Kg/m **2,45**

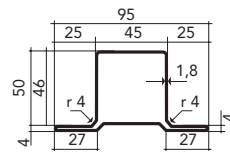


**T. 1709 -40%**  
 SPESSORE (mm) **1,5**  
 Kg/m **2,9**

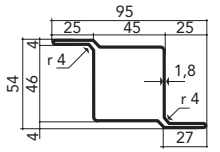
## PSB



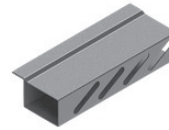
**TS 20 L (T. 2014) -30%**  
 SPESSORE (mm) **1,8**  
 Kg/m **3,29**



**TS 20 T (T. 2012) -30%**  
 SPESSORE (mm) **1,8**  
 Kg/m **4,06**

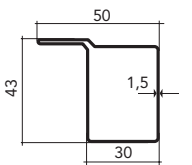
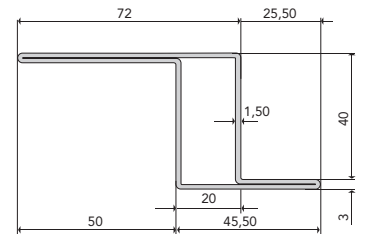


**TS 20 Z (T. 2013) -30%**  
 SPESSORE (mm) **1,8**  
 Kg/m **4,06**

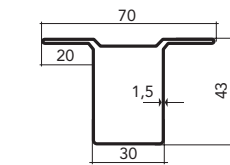


Asolato ovale

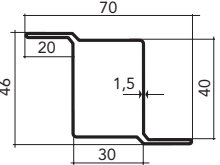
## PSL



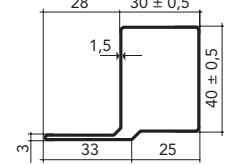
**TS 21 L (T. 1865) -45%**  
 SPESSORE (mm) **1,5**  
 Kg/m **2,05**



**TS 21 T (T. 1996) -45%**  
 SPESSORE (mm) **1,5**  
 Kg/m **2,64**

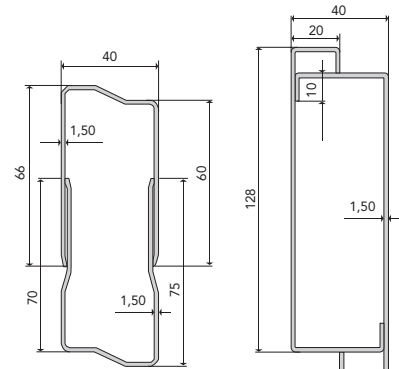


**TS 21 Z (T. 1972) -45%**  
 SPESSORE (mm) **1,5**  
 Kg/m **2,64**



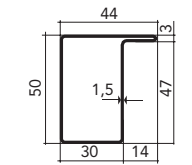
**T. 2121 -50%**  
 SPESSORE (mm) **1,5**  
 Kg/m **2,28**

## FASCE REGOLABILI

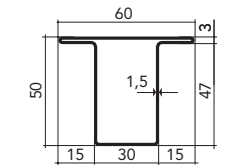


Mod. 3

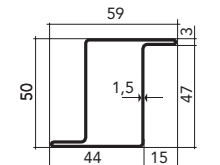
Mod. 4



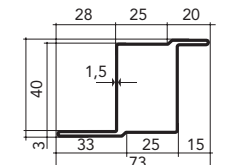
**SF 1/B (T. 1317) -40%**  
 SPESSORE (mm) **1,5**  
 Kg/m **2,15**



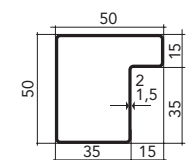
**SF 2/B (T. 1318) -40%**  
 SPESSORE (mm) **1,5**  
 Kg/m **2,52**



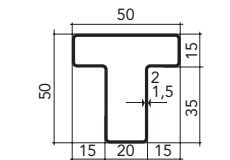
**SF 3/B (T. 1319) -40%**  
 SPESSORE (mm) **1,5**  
 Kg/m **2,52**



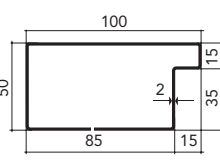
**T. 1846 -40%**  
 SPESSORE (mm) **1,5**  
 Kg/m **2,75**



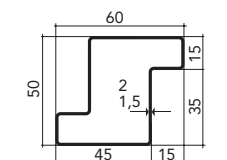
**16A (T. 618) -40%**  
 SPESSORE (mm) **1,5 - 2**  
 Kg/m **2,33 - 3,08**



**16B (T. 614) -40%**  
 SPESSORE (mm) **1,5 - 2**  
 Kg/m **2,33 - 3,08**



**16D (T. 1527) -30%**  
 SPESSORE (mm) **2**  
 Kg/m **4,65**



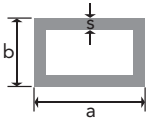
**16Z (T. 616) -40%**  
 SPESSORE (mm) **1,5 - 2**  
 Kg/m **2,56 - 3,39**



COMMERCIO PRODOTTI  
**SIDERURGICI**

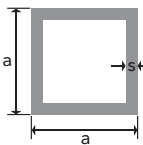
SEDE E MAGAZZINO  
 Via dei Papiri, snc - 00134 Roma  
 N. REA RM 1582898 -  
 P.IVA E C.F. 15319441000

# TUBOLARI DI FORMA



**TUBI RETTANGOLARI**  
SALDATI DA NASTRO  
QUALITÀ S 235JR (FE 360B)

| Dimen. mm | Spess. mm | Peso kg/m | Dimen. mm | Spess. mm | Peso kg/m | Dimen. mm | Spess. mm | Peso kg/m | Dimen. mm | Spess. mm | Peso kg/m | Dimen. mm | Spess. mm | Peso kg/m | Dimen. mm | Spess. mm | Peso kg/m |
|-----------|-----------|-----------|-----------|-----------|-----------|-----------|-----------|-----------|-----------|-----------|-----------|-----------|-----------|-----------|-----------|-----------|-----------|
| 15 x 10   | 1,2       | 0,43      | 40 x 15   | 1,2       | 0,99      | 60 x 15   | 1,5       | 1,71      | 70 x 50   | 1,5       | 2,74      | 100 x 40  | 1,5       | 3,22      | 140 x 70  | 3         | 9,80      |
|           | 1,5       | 0,52      |           | 1,5       | 1,23      |           | 2         | 2,25      |           | 2         | 3,62      |           | 2         | 4,26      |           | 4         | 13,00     |
| 20 x 10   | 1,2       | 0,55      |           | 2         | 1,62      | 60 x 20   | 1,5       | 1,86      |           | 3         | 5,96      |           | 3         | 6,32      | 140 x 80  | 3         | 9,84      |
|           | 1,5       | 0,68      | 40 x 20   | 1,2       | 1,08      |           | 2         | 2,45      |           | 4         | 7,05      |           | 4         | 8,33      |           | 4         | 12,89     |
|           | 2         | 0,90      |           | 1,5       | 1,34      |           | 3         | 3,60      | 80 x 15   | 1,5       | 2,10      | 100 x 50  | 1,5       | 3,50      | 150 x 30  | 2         | 5,52      |
| 20 x 15   | 1,2       | 0,61      |           | 2         | 1,76      | 60 x 25   | 1,5       | 1,93      |           | 2         | 2,80      |           | 2         | 4,60      |           | 3         | 8,19      |
|           | 1,5       | 0,75      |           | 3         | 2,57      |           | 2         | 2,54      | 80 x 20   | 1,5       | 2,30      |           | 3         | 6,80      | 150 x 40  | 2         | 5,90      |
|           | 2         | 0,98      | 40 x 25   | 1,5       | 1,50      |           | 3         | 3,72      |           | 2         | 3,01      |           | 4         | 8,90      |           | 3         | 8,80      |
| 25 x 10   | 1,2       | 0,61      |           | 2         | 1,96      | 60 x 30   | 1,5       | 2,04      |           | 3         | 4,45      | 100 x 60  | 2         | 4,90      | 150 x 50  | 2         | 6,15      |
|           | 1,5       | 0,75      |           | 3         | 2,86      |           | 2         | 2,70      | 80 x 30   | 1,5       | 2,52      |           | 3         | 7,30      |           | 3         | 9,15      |
|           | 2         | 0,99      | 40 x 30   | 1,5       | 1,60      |           | 3         | 3,97      |           | 2         | 3,33      |           | 4         | 9,50      |           | 4         | 12,05     |
| 25 x 15   | 1,2       | 0,70      |           | 2         | 2,11      |           | 4         | 5,19      |           | 3         | 4,92      | 100 x 80  | 3         | 8,40      |           | 6         | 21,47     |
|           | 1,5       | 0,87      |           | 3         | 3,09      | 60 x 40   | 1,5       | 2,30      |           | 4         | 6,46      |           | 4         | 10,50     | 150 x 100 | 3         | 11,70     |
|           | 2         | 1,13      | 45 x 20   | 1,5       | 1,49      |           | 2         | 3,01      | 80 x 40   | 1,5       | 2,74      | 110 x 50  | 2         | 4,90      |           | 4         | 15,60     |
| 30 x 10   | 1,2       | 0,70      |           | 2         | 1,96      |           | 3         | 4,45      |           | 2         | 3,62      |           | 3         | 7,30      | 160 x 50  | 2         | 6,46      |
|           | 1,5       | 0,87      |           | 3         | 2,86      |           | 4         | 5,83      |           | 3         | 5,36      | 120 x 30  | 2         | 4,60      |           | 3         | 9,60      |
|           | 2         | 1,13      | 50 x 10   | 1,5       | 1,34      | 60 x 50   | 2         | 3,22      |           | 4         | 7,05      |           | 3         | 6,80      | 160 x 80  | 3         | 11,60     |
| 30 x 15   | 1,2       | 0,79      |           | 2         | 1,78      |           | 3         | 4,66      | 80 x 50   | 1,5       | 3,00      | 120 x 40  | 2         | 4,90      |           | 4         | 14,60     |
|           | 1,5       | 0,97      | 50 x 15   | 1,5       | 1,50      | 70 x 20   | 1,5       | 2,04      |           | 2         | 3,97      |           | 3         | 7,30      |           | 5         | 17,38     |
|           | 2         | 1,28      |           | 2         | 1,96      |           | 2         | 2,70      |           | 3         | 5,88      |           | 4         | 9,50      |           | 6         | 20,53     |
|           | 3         | 1,85      | 50 x 20   | 1,5       | 1,60      |           | 3         | 3,97      |           | 4         | 7,74      | 120 x 60  | 2         | 5,50      | 180 x 60  | 3         | 11,05     |
| 30 x 20   | 1,2       | 0,90      |           | 2         | 2,11      | 70 x 25   | 1,5       | 2,15      | 80 x 60   | 1,5       | 3,21      |           | 3         | 8,20      |           | 4         | 14,60     |
|           | 1,5       | 1,12      |           | 3         | 3,09      |           | 2         | 2,84      |           | 2         | 4,26      |           | 4         | 10,80     |           | 5         | 17,4      |
|           | 2         | 1,47      | 50 x 25   | 1,5       | 1,71      |           | 3         | 4,20      |           | 3         | 6,32      |           | 5         | 13,16     |           | 6         | 20,53     |
|           | 3         | 2,10      |           | 2         | 2,25      | 70 x 30   | 1,5       | 2,30      |           | 4         | 8,33      |           | 6         | 15,80     | 180 x 80  | 3         | 11,73     |
| 35 x 10   | 1,5       | 0,97      |           | 3         | 3,31      |           | 2         | 3,01      | 90 x 30   | 1,5       | 2,74      | 120 x 80  | 2         | 6,15      |           | 4         | 15,41     |
|           | 2         | 1,28      | 50 x 30   | 1,5       | 1,86      |           | 3         | 4,45      |           | 2         | 3,62      |           | 3         | 9,15      | 200 x 100 | 3         | 14,00     |
| 35 x 15   | 1,5       | 1,12      |           | 2         | 2,45      |           | 4         | 5,83      |           | 3         | 5,36      |           | 4         | 12,05     |           | 4         | 18,35     |
|           | 2         | 1,47      |           | 3         | 3,60      | 70 x 35   | 1,5       | 2,40      |           | 4         | 7,05      |           | 5         | 14,24     |           | 5         | 22,70     |
| 35 x 20   | 1,2       | 0,99      | 50 x 40   | 1,5       | 2,04      |           | 2         | 3,20      | 90 x 50   | 3         | 6,36      | 130 x 50  | 2         | 5,50      | 250 x 100 | 3         | 16,20     |
|           | 1,5       | 1,23      |           | 2         | 2,70      |           | 3         | 4,70      |           | 4         | 8,50      |           | 3         | 8,20      |           | 4         | 21,50     |
|           | 2         | 1,62      |           | 3         | 3,97      | 70 x 40   | 1,5       | 2,52      | 100 x 20  | 1,5       | 2,74      |           | 4         | 10,80     |           | 6         | 31,00     |
|           | 3         | 2,37      |           | 4         | 4,20      |           | 2         | 3,33      |           | 2         | 3,62      | 130 x 60  | 2         | 7,48      | 300 x 150 | 4         | 27,48     |
| 40 x 10   | 1,2       | 0,90      | 60 x 10   | 1,5       | 1,60      |           | 3         | 4,92      |           | 3         | 5,36      |           | 3         | 9,70      |           | 5         | 33,9      |
|           | 1,5       | 1,12      |           | 2         | 2,15      |           | 4         | 6,46      | 100 x 30  | 1,5       | 3,00      | 140 x 60  | 3         | 8,9       |           | 6         | 40,34     |
|           | 2         | 1,48      |           |           |           |           |           |           |           | 2         | 3,97      |           | 4         | 11,64     |           |           |           |
|           |           |           |           |           |           |           |           |           |           | 3         | 5,88      |           |           |           |           |           |           |
|           |           |           |           |           |           |           |           |           |           | 4         | 7,66      |           |           |           |           |           |           |



**TUBI QUADRI**  
SALDATI DA NASTRO  
QUALITÀ S 235JR (FE 360B)

| Dimen. mm | Spess. mm | Peso kg/m | Dimen. mm | Spess. mm | Peso kg/m | Dimen. mm | Spess. mm | Peso kg/m | Dimen. mm | Spess. mm | Peso kg/m | Dimen. mm | Spess. mm | Peso kg/m | Dimen. mm | Spess. mm | Peso kg/m |
|-----------|-----------|-----------|-----------|-----------|-----------|-----------|-----------|-----------|-----------|-----------|-----------|-----------|-----------|-----------|-----------|-----------|-----------|
| 10 x 10   | 1,2       | 0,37      | 35 x 35   | 1,5       | 1,60      | 60 x 60   | 1,5       | 2,74      | 90 x 90   | 2         | 5,50      | 120 x 120 | 3         | 11,05     | 220 x 220 | 4         | 27,40     |
| 12 x 12   | 1,2       | 0,43      |           | 2         | 2,11      |           | 2         | 3,62      |           | 3         | 8,20      |           | 4         | 14,60     |           | 5         | 34,20     |
| 15 x 15   | 1,2       | 0,55      |           | 3         | 3,09      |           | 3         | 5,36      |           | 4         | 10,80     |           | 5         | 18,15     |           | 6         | 39,39     |
|           | 1,5       | 0,68      |           | 4         | 4,07      |           | 4         | 7,05      |           | 5         | 13,40     |           | 6         | 21,65     | 260 x 260 | 4         | 26,73     |
|           | 2         | 0,88      | 40 x 40   | 1,5       | 1,86      | 70 x 70   | 1,5       | 3,21      | 100 x 100 | 2         | 6,07      | 150 x 150 | 3         | 14,00     |           | 5         | 33,12     |
| 20 x 20   | 1,5       | 0,87      |           | 2         | 2,45      |           | 2         | 4,26      |           | 3         | 9,15      |           | 4         | 18,35     |           | 6         | 39,39     |
|           | 2         | 1,13      |           | 3         | 3,60      |           | 3         | 6,32      |           | 4         | 12,05     |           | 5         | 22,70     |           | 7         | 45,55     |
|           | 3         | 1,6       |           | 4         | 4,70      |           | 4         | 8,37      |           | 5         | 15,15     |           | 6         | 26,19     |           | 8         | 51,59     |
| 25 x 25   | 1,5       | 1,12      | 45 x 45   | 1,5       | 2,04      |           | 5         | 10,42     |           | 6         | 18,25     | 175 x 175 | 3         | 16,00     | 325 x 325 | 4         | 39,93     |
|           | 2         | 1,47      |           | 2         | 2,70      | 80 x 80   | 2         | 4,90      |           | 7         | 21,35     |           | 4         | 21,22     |           | 5         | 49,62     |
|           | 3         | 2,10      |           | 3         | 4,05      |           | 3         | 7,30      | 110 x 110 | 3         | 9,84      |           | 5         | 26,40     |           | 6         | 59,20     |
| 30 x 30   | 1,5       | 1,34      | 50 x 50   | 1,5       | 2,30      |           | 4         | 9,50      |           | 4         | 12,89     |           | 6         | 30,9      |           | 7         | 68,66     |
|           | 2         | 1,76      |           | 2         | 3,01      |           | 5         | 11,70     |           |           |           | 200 x 200 | 3         | 17,3      |           | 8         | 78,00     |
|           | 3         | 2,57      |           | 3         | 4,45      |           | 6         | 13,90     |           |           |           |           | 4         | 23,1      |           |           |           |
|           | 4         | 3,38      |           | 4         | 5,83      |           |           |           |           |           |           |           | 5         | 28,86     |           |           |           |
|           |           |           |           |           |           |           |           |           |           |           |           |           | 6         | 34,6      |           |           |           |

## Tabella per calcolo rete elettrosaldata

dei tipi di reti elettrosaldate standard in Italia,  
usate per l'armatura dei pavimenti industriali.

RETE ELETTROSALDATA  
(D.M. 9.01.96)

Tensione caratteristica a di snervamento (N/mm<sup>2</sup>)

Tensione caratteristica di rottura (N/mm<sup>2</sup>)

Tensione ammissibile o carico di lavoro

Acciai controllati in stabilimento (N/mm<sup>2</sup>)

Allungamento (A10%) · Rapporto (Ak / fyk)

## Tondo C.A.

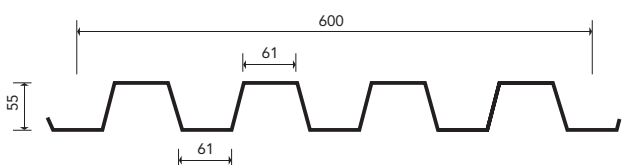
| Diametro (mm) | Peso (kg/m) | Diametro (mm) | Peso (kg/m) | Diametro (mm) | Peso (kg/m) |
|---------------|-------------|---------------|-------------|---------------|-------------|
| 6             | 0,222       | 16            | 1,578       | 25            | 3,853       |
| 8             | 0,395       | 18            | 1,998       | 26            | 4,168       |
| 10            | 0,617       | 20            | 2,466       | 28            | 4,834       |
| 12            | 0,888       | 22            | 2,984       | 30            | 5,549       |
| 14            | 1,208       | 24            | 3,551       | 32            | 6,313       |

## Rete Elettrosaldate Standard Italia

| Tipo | Ø filo     |            | Maglia     |            | Dimen. Pann. |            | Peso pannello (kg) | Peso al m <sup>2</sup> (kg) |
|------|------------|------------|------------|------------|--------------|------------|--------------------|-----------------------------|
|      | Long. (mm) | Long. (mm) | Long. (mm) | Long. (mm) | Long. (mm)   | Long. (mm) |                    |                             |
| 510  | 5          | 5          | 10         | 10         | 2000         | 3000       | 18,48              | 3,080                       |
| 515  | 5          | 5          | 15         | 15         | 2000         | 3000       | 12,63              | 2,105                       |
| 520  | 5          | 5          | 20         | 20         | 2000         | 3000       | 9,24               | 1,540                       |
| 610  | 6          | 6          | 10         | 10         | 2000         | 3000       | 26,64              | 4,440                       |
| 615  | 6          | 6          | 15         | 15         | 2000         | 3000       | 18,20              | 3,034                       |
| 620  | 6          | 6          | 20         | 20         | 2000         | 3000       | 13,32              | 2,220                       |
| 810  | 8          | 8          | 10         | 10         | 2000         | 3000       | 47,40              | 7,900                       |
| 815  | 8          | 8          | 15         | 15         | 2000         | 3000       | 32,39              | 5,398                       |
| 820  | 8          | 8          | 20         | 20         | 2000         | 3000       | 23,70              | 3,950                       |
| 1020 | 10         | 10         | 20         | 20         | 2000         | 3000       | 37,02              | 6,170                       |
| 510  | 5          | 5          | 10         | 10         | 2250         | 4000       | 28,03              | 3,114                       |
| 515  | 5          | 5          | 15         | 15         | 2250         | 4000       | 18,60              | 2,066                       |
| 520  | 5          | 5          | 20         | 20         | 2250         | 4000       | 14,33              | 1,591                       |
| 610  | 6          | 6          | 10         | 10         | 2250         | 4000       | 40,40              | 4,489                       |
| 615  | 6          | 6          | 15         | 15         | 2250         | 4000       | 26,81              | 2,979                       |
| 620  | 6          | 6          | 20         | 20         | 2250         | 4000       | 20,64              | 2,294                       |
| 810  | 8          | 8          | 10         | 10         | 2250         | 4000       | 71,89              | 7,988                       |
| 815  | 8          | 8          | 15         | 15         | 2250         | 4000       | 47,70              | 5,300                       |
| 820  | 8          | 8          | 20         | 20         | 2250         | 4000       | 36,70              | 4,082                       |
| 1020 | 10         | 10         | 20         | 20         | 2250         | 4000       | 57,34              | 6,376                       |
| 1220 | 12         | 12         | 20         | 20         | 2250         | 4000       | 82,58              | 9,176                       |

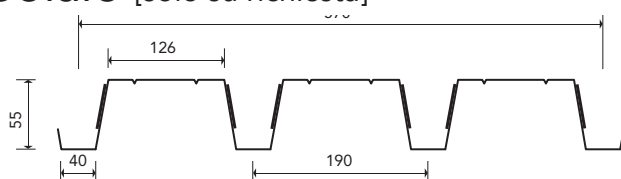
## LAMIERE GRECATE

### Solaio



|                            | Spessore (mm) |      |      |      |      |
|----------------------------|---------------|------|------|------|------|
|                            | 0,6           | 0,7  | 0,8  | 1,0  | 1,25 |
| Peso (kg/mm <sup>2</sup> ) | 7,8           | 9,1  | 10,5 | 13,1 | 16,3 |
| J (cm <sup>4</sup> /m)     | 38,8          | 47,2 | 55,8 | 73,7 | 96,3 |
| W (cm <sup>3</sup> /m)     | 11,3          | 13,9 | 16,8 | 23   | 31,3 |

### Solaio [solo su richiesta]

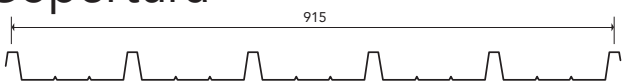


|                            | Spessore (mm) |       |        |        |        |
|----------------------------|---------------|-------|--------|--------|--------|
|                            | 0,6           | 0,7   | 0,8    | 1,0    | 1,25   |
| Peso (kg/mm <sup>2</sup> ) | 7,56          | 8,82  | 10,08  | 12,60  | 15,12  |
| J (cm <sup>4</sup> /m)     | 81,22         | 98,17 | 115,35 | 148,09 | 178,92 |
| W (cm <sup>3</sup> /m)     | 17,55         | 20,38 | 23,63  | 30,15  | 36,59  |

**Tolleranze Dimensionali:** Lunghezza: +10 mm fino a 3.000 mm  
+20 mm oltre 3.000 mm  
-5 mm per tutte le lunghezze

Larghezza utile: ± 5mm Fuori squadra: S ≤ 0,5% della larghezza utile

### Copertura



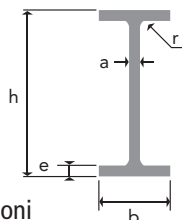
|                            | Spessore (mm) |      |      |      |       |
|----------------------------|---------------|------|------|------|-------|
|                            | 0,5           | 0,6  | 0,7  | 0,8  | 1,0   |
| Peso (kg/mm <sup>2</sup> ) | 5,28          | 6,42 | 7,49 | 8,57 | 10,72 |
| J (cm <sup>4</sup> /m)     | 10,3          | 13,7 | 16,0 | 18,3 | 22,8  |
| W (cm <sup>3</sup> /m)     | 3,53          | 4,71 | 5,51 | 6,32 | 7,94  |

#### Tolleranze Dimensionali

Lunghezza: +10 mm fino a 3.000 mm  
+20 mm oltre 3.000 mm  
-5 mm per tutte le lunghezze  
Larghezza utile: ± 5mm  
Fuori squadra: S ≤ 0,5% della larghezza utile

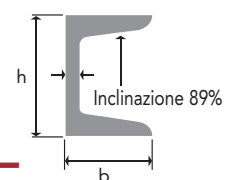
# TRAVI IN FERRO

## Travi "IPE"



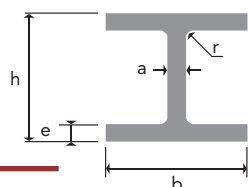
| Designazione | Peso kg/m | Sezione cmq | Dimensioni |      |      |      |      |
|--------------|-----------|-------------|------------|------|------|------|------|
|              |           |             | h mm       | b mm | a mm | e mm | r mm |
| 80           | 6,0       | 7,64        | 80         | 46   | 3,8  | 5,2  | 5    |
| 100          | 8,1       | 10,3        | 100        | 55   | 4,1  | 5,7  | 7    |
| 120          | 10,4      | 13,2        | 120        | 64   | 4,4  | 6,3  | 7    |
| 140          | 12,9      | 16,4        | 140        | 73   | 4,7  | 6,9  | 7    |
| 160          | 15,8      | 20,1        | 160        | 82   | 5,0  | 7,4  | 9    |
| 180          | 18,8      | 23,9        | 180        | 91   | 5,3  | 8,0  | 9    |
| 200          | 22,4      | 28,5        | 200        | 100  | 5,6  | 8,5  | 12   |
| 220          | 26,2      | 33,4        | 220        | 110  | 5,9  | 9,2  | 12   |
| 240          | 30,7      | 39,1        | 240        | 120  | 6,2  | 9,8  | 15   |
| 270          | 36,1      | 45,9        | 270        | 135  | 6,6  | 10,2 | 15   |
| 300          | 42,2      | 53,8        | 300        | 150  | 7,1  | 10,7 | 15   |
| 330          | 49,1      | 62,6        | 330        | 160  | 7,5  | 11,5 | 18   |
| 360          | 57,1      | 72,7        | 360        | 170  | 8,0  | 12,7 | 18   |
| 400          | 66,3      | 84,5        | 400        | 180  | 8,6  | 13,5 | 21   |
| 450          | 77,6      | 98,8        | 450        | 190  | 9,4  | 14,6 | 21   |
| 500          | 90,7      | 116         | 500        | 200  | 10,2 | 16,0 | 21   |
| 550          | 106       | 134         | 550        | 210  | 11,1 | 17,2 | 24   |
| 600          | 122       | 156         | 600        | 220  | 12,0 | 19,0 | 24   |

## Travi "UNP"



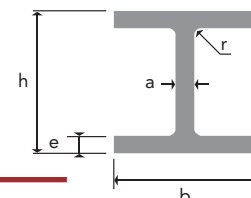
| Designazione | Peso kg/m | Sezione cmq | Dimensioni |      |      |       |      |
|--------------|-----------|-------------|------------|------|------|-------|------|
|              |           |             | h mm       | b mm | a mm | e mm  | r mm |
| 80           | 8,65      | 11,0        | 80         | 45   | 6    | 7,76  | 8    |
| 100          | 10,6      | 13,5        | 100        | 50   | 6    | 8,26  | 8,5  |
| 120          | 13,3      | 17,0        | 120        | 55   | 7    | 8,72  | 9    |
| 140          | 16,0      | 20,4        | 140        | 60   | 7    | 9,72  | 10   |
| 160          | 18,9      | 24,0        | 160        | 65   | 7,5  | 10,2  | 10,5 |
| 180          | 22,0      | 28,0        | 180        | 70   | 8    | 10,68 | 11   |
| 200          | 25,3      | 32,2        | 200        | 75   | 8,5  | 11,16 | 11,5 |
| 220          | 29,4      | 37,4        | 220        | 80   | 9    | 12,14 | 12,5 |
| 240          | 33,2      | 42,3        | 240        | 85   | 9,5  | 12,62 | 13   |
| 260          | 37,9      | 48,3        | 260        | 90   | 10   | 13,6  | 14   |
| 280          | 41,9      | 53,4        | 280        | 95   | 10   | 14,6  | 15   |
| 300          | 46,1      | 58,8        | 300        | 100  | 10   | 15,6  | 16   |
| 320          | 59,5      | 75,8        | 320        | 100  | 14   | 17,5  | 17,5 |
| 350          | 60,6      | 77,3        | 350        | 100  | 14   | 16    | 16   |
| 380          | 63,1      | 80,4        | 380        | 102  | 13,5 | 16    | 16   |
| 400          | 71,8      | 91,5        | 400        | 110  | 14   | 18    | 18   |

## Travi "HEA"



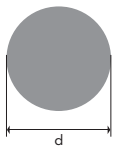
| Designazione | Peso kg/m | Sezione cmq | Dimensioni |      |      |      |      |
|--------------|-----------|-------------|------------|------|------|------|------|
|              |           |             | h mm       | b mm | a mm | e mm | r mm |
| 100          | 16,7      | 21,2        | 96         | 100  | 5    | 8    | 12   |
| 120          | 19,9      | 25,3        | 114        | 120  | 5    | 8    | 12   |
| 140          | 24,7      | 31,4        | 133        | 140  | 5,5  | 8,5  | 12   |
| 160          | 30,4      | 38,8        | 152        | 160  | 6    | 9    | 15   |
| 180          | 35,5      | 45,3        | 171        | 180  | 6    | 9,5  | 15   |
| 200          | 42,3      | 53,8        | 190        | 200  | 6,5  | 10   | 18   |
| 220          | 50,5      | 64,3        | 210        | 220  | 7    | 11   | 18   |
| 240          | 60,3      | 76,8        | 230        | 240  | 7,5  | 12   | 21   |
| 260          | 68,2      | 86,8        | 250        | 260  | 7,5  | 12,5 | 24   |
| 280          | 76,4      | 97,3        | 270        | 280  | 8    | 13   | 24   |
| 300          | 88,3      | 113         | 290        | 300  | 8,5  | 14   | 27   |
| 320          | 97,6      | 124         | 310        | 300  | 9    | 15,5 | 27   |
| 340          | 105       | 133         | 330        | 300  | 9,5  | 16,5 | 27   |
| 360          | 112       | 143         | 350        | 300  | 10   | 17,5 | 27   |
| 400          | 125       | 159         | 390        | 300  | 11   | 19   | 27   |
| 450          | 140       | 178         | 440        | 300  | 11,5 | 21   | 27   |
| 500          | 155       | 198         | 490        | 300  | 12   | 23   | 27   |
| 550          | 166       | 212         | 540        | 300  | 12,5 | 24   | 27   |
| 600          | 178       | 226         | 590        | 300  | 13   | 25   | 27   |

## Travi "HEB"



| Designazione | Peso kg/m | Sezione cmq | Dimensioni |      |      |      |      |
|--------------|-----------|-------------|------------|------|------|------|------|
|              |           |             | h mm       | b mm | a mm | e mm | r mm |
| 100          | 20,4      | 26,0        | 100        | 100  | 6    | 10   | 12   |
| 120          | 26,7      | 34,0        | 120        | 120  | 6,5  | 11   | 12   |
| 140          | 33,7      | 43,0        | 140        | 140  | 7    | 12   | 12   |
| 160          | 42,6      | 54,3        | 160        | 160  | 8    | 13   | 15   |
| 180          | 51,2      | 65,3        | 180        | 180  | 8,5  | 14   | 15   |
| 200          | 61,3      | 78,1        | 200        | 200  | 9    | 15   | 18   |
| 220          | 71,5      | 91,0        | 220        | 220  | 9,5  | 16   | 18   |
| 240          | 83,2      | 106         | 240        | 240  | 10   | 17   | 21   |
| 260          | 93,0      | 118         | 260        | 260  | 10   | 17,5 | 24   |
| 280          | 103       | 131         | 280        | 280  | 10,5 | 18   | 24   |
| 300          | 117       | 149         | 300        | 300  | 11   | 19   | 27   |
| 320          | 127       | 161         | 320        | 300  | 11,5 | 20,5 | 27   |
| 340          | 134       | 171         | 340        | 300  | 12   | 21,5 | 27   |
| 360          | 142       | 181         | 360        | 300  | 12,5 | 22,5 | 27   |
| 400          | 155       | 198         | 400        | 300  | 13,5 | 24   | 27   |
| 450          | 171       | 218         | 450        | 300  | 14   | 26   | 27   |
| 500          | 187       | 239         | 500        | 300  | 14,5 | 28   | 27   |
| 550          | 199       | 254         | 550        | 300  | 15   | 29   | 27   |
| 600          | 212       | 270         | 600        | 300  | 15,5 | 30   | 27   |

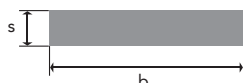




## Tondi EURONORM 10025 - UNI EU 60

# LAMINATI

| Diametro mm | Peso kg/m | Diametro mm | Peso kg/m | Diametro mm | Peso kg/m | Diametro mm | Peso kg/m | Diametro mm | Peso kg/m | Diametro mm | Peso kg/m | Diametro mm | Peso kg/m | Diametro mm | Peso kg/m | Diametro mm | Peso kg/m |     |        |
|-------------|-----------|-------------|-----------|-------------|-----------|-------------|-----------|-------------|-----------|-------------|-----------|-------------|-----------|-------------|-----------|-------------|-----------|-----|--------|
| 6           | 0,222     | 13          | 1,04      | 21          | 2,72      | 30          | 5,55      | 40          | 9,86      | 58          | 20,70     | 78          | 37,50     | 105         | 68,00     | 145         | 130       | 220 | 489    |
|             |           | 14          | 1,21      | 22          | 2,98      | 32          | 6,31      | 42          | 10,90     | 60          | 22,20     | 80          | 39,50     | 110         | 74,60     | 150         | 139       | 230 | 326,19 |
|             |           | 15          | 1,39      | 23          | 3,26      | 33          | 6,71      | 45          | 12,50     | 63          | 24,50     | 83          | 42,50     | 115         | 81,50     | 155         | 148       | 240 | 355,16 |
| 8           | 0,395     | 16          | 1,58      | 24          | 3,55      | 34          | 7,13      | 48          | 14,20     | 65          | 26,00     | 85          | 44,50     | 120         | 88,80     | 160         | 158       | 250 | 385,38 |
|             |           | 17          | 1,78      | 25          | 3,85      | 35          | 7,55      | 50          | 15,40     | 68          | 28,50     | 88          | 47,70     | 125         | 96,30     | 170         | 178       | 300 | 554,88 |
| 10          | 0,617     | 18          | 2,00      | 26          | 4,17      | 36          | 7,99      | 52          | 16,70     | 70          | 30,20     | 90          | 49,90     | 130         | 104       | 180         | 200       | 400 | 980,31 |
|             |           | 19          | 2,23      | 27          | 4,49      | 37          | 8,44      | 53          | 17,30     | 73          | 32,90     | 95          | 55,60     | 135         | 112       | 190         | 223       | 500 | 1531,7 |
| 12          | 0,888     | 20          | 2,47      | 28          | 4,83      | 38          | 8,90      | 55          | 18,70     | 75          | 34,70     | 100         | 61,60     | 140         | 121       | 200         | 247       |     |        |



## Piatti EURONORM 10025 - UNI EU 58

| b x s mm | peso kg/m | b x s mm | Peso kg/m | b x s mm | peso kg/m | b x s mm | Peso kg/m | b x s mm | peso kg/m | b x s mm | Peso kg/m | b x s mm | peso kg/m | b x s mm | Peso kg/m | b x s mm | peso kg/m |         |       |
|----------|-----------|----------|-----------|----------|-----------|----------|-----------|----------|-----------|----------|-----------|----------|-----------|----------|-----------|----------|-----------|---------|-------|
| 10 x 3   | 0,236     | 18 x 3   | 0,424     | 30 x 3   | 0,707     | 40 x 3   | 0,942     | 50 x 3   | 1,18      | 70 x 3   | 1,65      | 90 x 3   | 2,12      | 110 x 6  | 5,18      | 130 x 6  | 6,12      | 150 x 4 | 4,71  |
| 4        | 0,314     | 4        | 0,565     | 4        | 0,942     | 4        | 1,260     | 4        | 1,57      | 4        | 2,20      | 4        | 2,83      | 8        | 6,91      | 8        | 8,16      | 5       | 5,89  |
| 5        | 0,393     | 5        | 0,707     | 5        | 1,180     | 5        | 1,570     | 5        | 1,96      | 5        | 2,75      | 5        | 3,53      | 10       | 8,64      | 10       | 10,20     | 6       | 7,06  |
| 6        | 0,471     | 6        | 0,848     | 6        | 1,410     | 6        | 1,880     | 6        | 2,36      | 6        | 3,30      | 6        | 4,24      | 12       | 10,40     | 12       | 12,20     | 8       | 9,42  |
| 12 x 3   | 0,283     | 18 x 8   | 1,130     | 8        | 1,880     | 8        | 2,510     | 8        | 3,14      | 8        | 4,40      | 8        | 5,65      | 15       | 13,00     | 15       | 15,30     | 10      | 11,80 |
| 4        | 0,377     | 10       | 1,410     | 10       | 2,360     | 10       | 3,140     | 10       | 3,93      | 10       | 5,50      | 10       | 7,07      | 20       | 17,30     | 20       | 20,40     | 12      | 14,10 |
| 5        | 0,471     | 20 x 3   | 0,471     | 12       | 2,830     | 12       | 3,770     | 12       | 4,71      | 12       | 6,59      | 12       | 8,48      | 25       | 21,60     | 25       | 25,50     | 15      | 17,70 |
| 6        | 0,565     | 4        | 0,628     | 15       | 3,530     | 15       | 4,710     | 15       | 5,89      | 15       | 8,24      | 15       | 10,60     | 30       | 25,90     | 30       | 30,60     | 20      | 23,60 |
| 8        | 0,754     | 5        | 0,785     | 18       | 4,239     | 18       | 5,652     | 18       | 7,06      | 18       | 9,89      | 18       | 12,72     | 40       | 34,50     | 40       | 40,80     | 25      | 29,40 |
| 14 x 3   | 0,330     | 6        | 0,942     | 20       | 4,710     | 20       | 6,280     | 20       | 7,85      | 20       | 11,00     | 20       | 14,10     | 50       | 43,20     | 50       | 51,00     | 30      | 35,30 |
| 4        | 0,440     | 8        | 1,260     | 35 x 3   | 0,824     | 25       | 7,850     | 25       | 9,81      | 25       | 13,70     | 25       | 17,70     | 60       | 51,80     | 60       | 61,20     | 40      | 47,10 |
| 5        | 0,550     | 10       | 1,570     | 4        | 1,100     | 30       | 9,420     | 30       | 11,80     | 30       | 16,50     | 30       | 21,20     | 120 x 4  | 3,77      | 140 x 5  | 5,50      | 50      | 58,90 |
| 6        | 0,659     | 12       | 1,880     | 5        | 1,370     | 45 x 3   | 1,06      | 35       | 13,74     | 40       | 22,00     | 40       | 28,30     | 5        | 4,71      | 6        | 6,59      | 60      | 70,60 |
| 8        | 0,879     | 15       | 2,360     | 6        | 1,650     | 4        | 1,41      | 40       | 15,70     | 50       | 27,50     | 50       | 35,30     | 6        | 5,65      | 8        | 8,79      |         |       |
| 15 x 3   | 0,351     | 25 x 3   | 0,589     | 8        | 2,200     | 5        | 1,77      | 60 x 3   | 1,41      | 60       | 33,00     | 60       | 42,40     | 8        | 7,54      | 10       | 11,00     |         |       |
| 4        | 0,468     | 4        | 0,785     | 10       | 2,750     | 6        | 2,12      | 4        | 1,88      | 80 x 3   | 1,88      | 100 x 3  | 2,35      | 10       | 9,42      | 12       | 13,20     |         |       |
| 5        | 0,585     | 5        | 0,981     | 12       | 3,300     | 8        | 2,83      | 5        | 2,36      | 4        | 2,51      | 4        | 3,14      | 12       | 11,30     | 15       | 16,50     |         |       |
| 6        | 0,702     | 6        | 1,180     | 15       | 4,120     | 10       | 3,53      | 6        | 2,83      | 5        | 3,14      | 5        | 3,93      | 15       | 14,10     | 20       | 22,00     |         |       |
| 8        | 0,936     | 8        | 1,570     | 18       | 4,945     | 12       | 4,24      | 8        | 3,77      | 6        | 3,77      | 6        | 4,71      | 20       | 18,80     | 25       | 27,50     |         |       |
| 10       | 1,170     | 10       | 1,962     | 20       | 5,500     | 15       | 5,30      | 10       | 4,71      | 8        | 5,02      | 8        | 6,28      | 25       | 23,60     | 30       | 33,00     |         |       |
| 16 x 3   | 0,377     | 12       | 2,360     | 25       | 6,870     | 18       | 6,36      | 12       | 5,65      | 10       | 6,28      | 10       | 7,85      | 30       | 28,30     | 40       | 44,00     |         |       |
| 4        | 0,502     | 15       | 2,940     |          |           | 20       | 7,07      | 15       | 7,07      | 12       | 7,54      | 12       | 9,42      | 40       | 37,70     | 50       | 55,00     |         |       |
| 5        | 0,628     |          |           |          |           | 25       | 8,83      | 18       | 8,48      | 15       | 9,42      | 15       | 11,80     | 50       | 47,10     | 60       | 66,00     |         |       |
| 6        | 0,754     |          |           |          |           | 30       | 10,60     | 20       | 9,42      | 18       | 11,30     | 18       | 14,13     | 60       | 56,50     |          |           |         |       |
| 8        | 1,000     |          |           |          |           |          |           | 25       | 11,80     | 20       | 12,60     | 20       | 15,70     |          |           |          |           |         |       |
| 10       | 1,260     |          |           |          |           |          |           | 30       | 14,10     | 25       | 15,70     | 25       | 19,60     |          |           |          |           |         |       |
|          |           |          |           |          |           |          |           | 40       | 18,80     | 30       | 18,80     | 30       | 23,60     |          |           |          |           |         |       |
|          |           |          |           |          |           |          |           | 50       | 23,60     | 40       | 25,10     | 40       | 31,40     |          |           |          |           |         |       |
|          |           |          |           |          |           |          |           | 50       | 31,40     | 50       | 39,25     |          |           |          |           |          |           |         |       |
|          |           |          |           |          |           |          |           | 60       | 37,70     | 60       | 47,10     |          |           |          |           |          |           |         |       |

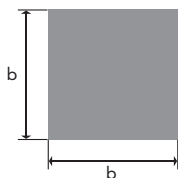


## Larghi piatti EURONORM 10025 - UNI EU 91

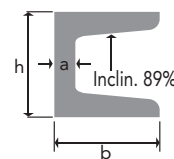
| b x s mm | peso kg/m | b x s mm | Peso kg/m | b x s mm | peso kg/m | b x s mm | Peso kg/m | b x s mm | peso kg/m | b x s mm | Peso kg/m | b x s mm | peso kg/m | b x s mm | Peso kg/m | b x s mm | peso kg/m |          |       |
|----------|-----------|----------|-----------|----------|-----------|----------|-----------|----------|-----------|----------|-----------|----------|-----------|----------|-----------|----------|-----------|----------|-------|
| 160 x 5  | 6,28      | 180 x 5  | 7,06      | 200 x 5  | 7,85      | 220 x 10 | 17,30     | 250 x 8  | 15,70     | 280 x 10 | 22,00     | 300 x 10 | 23,60     | 320 x 10 | 25,10     | 350 x 12 | 33,00     | 380 x 15 | 44,70 |
| 6        | 7,54      | 6        | 8,48      | 6        | 9,42      | 12       | 20,70     | 10       | 19,60     | 12       | 26,40     | 12       | 28,30     | 12       | 30,10     | 15       | 41,20     | 20       | 60,00 |
| 8        | 10,00     | 8        | 11,30     | 8        | 12,60     | 15       | 25,90     | 12       | 23,60     | 15       | 33,00     | 15       | 35,30     | 15       | 37,70     | 20       | 55,00     | 25       | 74,60 |
| 10       | 12,60     | 10       | 14,10     | 10       | 15,70     | 20       | 34,50     | 15       | 29,40     | 20       | 44,00     | 20       | 47,10     | 20       | 50,20     | 25       | 68,70     | 30       | 89,50 |
| 12       | 15,10     | 12       | 17,00     | 12       | 18,80     | 25       | 43,20     | 20       | 39,20     | 25       | 55,00     | 25       | 58,90     | 25       | 62,80     | 30       | 82,40     | 400 x 15 | 47,20 |
| 15       | 18,80     | 15       | 21,20     | 15       | 23,60     | 30       | 51,80     | 25       | 49,10     | 30       | 65,90     | 30       | 70,60     | 30       | 75,40     |          |           | 20       | 62,80 |
| 20       | 25,10     | 20       | 28,30     | 20       | 31,40     | 35       | 60,40     | 30       | 58,90     | 35       | 76,90     | 35       | 82,40     | 35       | 87,90     |          |           | 25       | 78,50 |
| 25       | 31,40     | 25       | 35,30     | 25       | 39,20     | 40       | 69,10     | 35       | 68,70     | 40       | 87,90     | 40       | 94,20     | 40       | 100,00    |          |           | 30       | 94,20 |
| 30       | 37,70     | 30       | 42,40     | 30       | 47,10     |          |           | 40       | 78,50     |          |           |          |           |          |           |          |           |          |       |
| 35       | 44,00     | 35       | 49,50     | 35       | 55,00     |          |           |          |           |          |           |          |           |          |           |          |           |          |       |
| 40       | 50,20     | 40       | 56,50     | 40       | 62,80     |          |           |          |           |          |           |          |           |          |           |          |           |          |       |

## Quadri

EURONORM 10025  
UNI EU 59

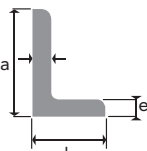


| lato mm. | Peso kg/m | lato mm. | Peso kg/m | lato mm. | Peso kg/m | lato mm. | Peso kg/m | lato mm. | Peso kg/m | lato mm. | Peso kg/m |
|----------|-----------|----------|-----------|----------|-----------|----------|-----------|----------|-----------|----------|-----------|
| 5        | 0,196     | 11       | 0,950     | 18       | 2,54      | 28       | 6,15      | 45       | 15,9      | 90       | 63,6      |
| 6        | 0,283     | 12       | 1,13      | 19       | 2,83      | 30       | 7,07      | 50       | 19,6      | 100      | 78,5      |
| 7        | 0,385     | 13       | 1,33      | 20       | 3,14      | 32       | 8,04      | 55       | 23,7      | 110      | 95,0      |
| 8        | 0,502     | 14       | 1,54      | 22       | 3,80      | 35       | 9,62      | 60       | 28,3      | 120      | 113       |
| 9        | 0,636     | 15       | 1,77      | 25       | 4,91      | 38       | 11,3      | 65       | 33,2      | 130      | 133       |
| 10       | 0,785     | 16       | 2,01      | 26       | 5,31      | 40       | 12,6      | 70       | 38,5      | 140      | 154       |
|          |           |          |           |          |           |          |           | 80       | 50,2      | 150      | 177       |



## "Elle" a spigoli tondi

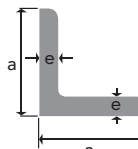
EURONORM 10025  
UNI EU 57



| a x b x e mm | Peso kg/m | a x b x e mm   | Peso kg/m |
|--------------|-----------|----------------|-----------|
| 30 x 20 x 4  | 1,46      | 100 x 75 x 7   | 9,27      |
| 5            | 1,78      | 8              | 10,60     |
| 35 x 20 x 4  | 1,61      | 9              | 11,92     |
| 5            | 1,97      | 10             | 13,20     |
| 40 x 20 x 4  | 1,77      | 11             | 14,57     |
| 5            | 2,17      | 110 x 75 x 8   | 11,12     |
| 40 x 25 x 4  | 1,93      | 10             | 13,73     |
| 5            | 2,37      | 120 x 60 x 8   | 10,90     |
| 40 x 30 x 4  | 2,25      | 10             | 13,40     |
| 5            | 2,76      | 12             | 15,90     |
| 6            | 3,27      | 120 x 80 x 8   | 12,20     |
| 50 x 30 x 5  | 2,96      | 10             | 15,00     |
| 6            | 3,52      | 12             | 17,80     |
| 60 x 30 x 5  | 3,37      | 14             | 20,50     |
| 6            | 3,99      | 130 x 65 x 8   | 11,80     |
| 7            | 4,59      | 10             | 14,60     |
| 60 x 40 x 5  | 3,76      | 12             | 17,30     |
| 6            | 4,46      | 130 x 90 x 10  | 16,60     |
| 7            | 5,14      | 12             | 19,70     |
| 75 x 50 x 6  | 5,65      | 150 x 75 x 9   | 15,40     |
| 7            | 6,53      | 11             | 18,60     |
| 9            | 8,22      | 150 x 90 x 10  | 18,20     |
| 80 x 40 x 6  | 5,41      | 12             | 21,60     |
| 7            | 6,25      | 150 x 100 x 10 | 19,30     |
| 8            | 7,07      | 12             | 22,60     |
| 80 x 60 x 6  | 6,37      | 14             | 26,10     |
| 7            | 7,36      | 160 x 80 x 9   | 16,40     |
| 8            | 8,34      | 12             | 21,60     |
| 10           | 10,20     | 14             | 25,00     |
| 100 x 50 x 6 | 6,85      | 200 x 90 x 10  | 22,10     |
| 7            | 7,79      | 12             | 26,30     |
| 8            | 8,99      | 15             | 32,50     |
| 10           | 11,10     | 200 x 100 x 10 | 23,00     |
| 100 x 65 x 7 | 8,77      | 12             | 27,30     |
| 9            | 11,10     | 14             | 31,60     |
| 10           | 12,30     | 16             | 35,90     |
| 11           | 13,40     | 18             | 40,00     |

## Angolari a spigoli tondi

EURONORM 10025 UNI EU 56



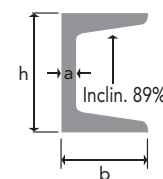
| a x a x e mm | Peso kg/m | a x a x e mm | Peso kg/m | a x a x e mm  | Peso kg/m | a x a x e mm    | Peso kg/m |
|--------------|-----------|--------------|-----------|---------------|-----------|-----------------|-----------|
| 15 x 15 x 3  | 0,63      | 60 x 60 x 4  | 3,70      | 90 x 90 x 5   | 6,87      | 130 x 130 x 6,5 | 12,90     |
| 20 x 20 x 3  | 0,88      | 5            | 4,57      | 6             | 8,20      | 7               | 13,90     |
| 4            | 1,14      | 6            | 5,42      | 7             | 9,58      | 8               | 15,95     |
| 25 x 25 x 3  | 1,12      | 7            | 6,24      | 8             | 10,90     | 9               | 17,85     |
| 4            | 1,46      | 8            | 7,09      | 9             | 12,20     | 10              | 19,80     |
| 5            | 1,78      | 10           | 8,69      | 11            | 14,70     | 11              | 21,60     |
| 30 x 30 x 3  | 1,36      | 65 x 65 x 4  | 4,02      | 12            | 15,90     | 12              | 23,60     |
| 4            | 1,78      | 5            | 4,96      | 15            | 19,50     | 14              | 27,20     |
| 5            | 2,18      | 6            | 5,91      | 100 x 100 x 5 | 7,65      | 16              | 30,90     |
| 6            | 2,58      | 7            | 6,83      | 6             | 9,22      | 140 x 140 x 13  | 27,50     |
| 35 x 35 x 3  | 1,60      | 8            | 7,73      | 7             | 10,80     | 14              | 29,50     |
| 4            | 2,09      | 70 x 70 x 4  | 4,35      | 8             | 12,20     | 15              | 31,40     |
| 5            | 2,57      | 5            | 5,37      | 9             | 13,60     | 17              | 35,30     |
| 6            | 3,04      | 6            | 6,38      | 10            | 15,10     | 150 x 150 x 12  | 27,20     |
| 40 x 40 x 3  | 1,84      | 7            | 7,38      | 11            | 16,40     | 13              | 29,40     |
| 4            | 2,42      | 8            | 8,36      | 12            | 17,80     | 14              | 31,60     |
| 5            | 2,97      | 9            | 9,34      | 14            | 20,60     | 15              | 33,80     |
| 6            | 3,52      | 10           | 10,30     | 16            | 24,20     | 16              | 35,90     |
| 45 x 45 x 3  | 2,09      | 11           | 11,20     | 110 x 110 x 6 | 11,20     | 18              | 40,10     |
| 4            | 2,74      | 75 x 75 x 4  | 4,72      | 7             | 13,00     | 20              | 44,20     |
| 5            | 3,38      | 5            | 5,78      | 8             | 13,50     | 160 x 160 x 15  | 36,20     |
| 6            | 4,00      | 6            | 6,87      | 10            | 16,60     | 17              | 40,70     |
| 7            | 4,60      | 7            | 7,94      | 12            | 19,70     | 19              | 45,10     |
| 50 x 50 x 3  | 2,35      | 8            | 9,03      | 14            | 22,80     | 180 x 180 x 15  | 41,00     |
| 4            | 3,06      | 10           | 11,10     | 120 x 120 x 6 | 11,20     | 16              | 43,50     |
| 5            | 3,77      | 12           | 13,10     | 7             | 13,00     | 18              | 48,60     |
| 6            | 4,47      | 80 x 80 x 4  | 5,02      | 8             | 14,75     | 20              | 53,70     |
| 7            | 5,15      | 5            | 6,04      | 10            | 18,20     | 200 x 200 x 15  | 45,8      |
| 8            | 5,82      | 6            | 7,34      | 11            | 19,30     | 16              | 48,50     |
| 9            | 6,17      | 7            | 8,49      | 12            | 21,60     | 18              | 54,30     |
| 55 x 55 x 4  | 3,35      | 8            | 9,63      | 13            | 23,30     | 20              | 59,90     |
| 5            | 4,16      | 10           | 11,90     | 14            | 25,00     | 22              | 65,60     |
| 6            | 4,95      | 12           | 14,00     | 15            | 26,60     | 24              | 71,10     |
| 7            | 5,70      |              |           | 18            | 31,50     | 26              | 76,60     |
| 8            | 6,46      |              |           |               |           |                 |           |

## Profilati a "U" serie speciale

EURONORM 10025  
UNI EU 54

| h x b mm | sp. anima mm | sp. ala mm | Peso kg/m |
|----------|--------------|------------|-----------|
| 25 x 12  | 4            | 4          | 1,30      |
| 30 x 15  | 5            | 5          | 1,90      |
| 35 x 17  | 5,5          | 5,5        | 2,52      |
| 40 x 20  | 6            | 6          | 3,23      |
| 50 x 25  | 6            | 6          | 4,15      |
| 60 x 30  | 6,5          | 6,5        | 5,45      |

Non unificato



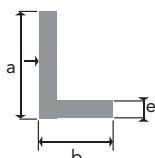
## Profilati "UPS" EURONORM 10025

UNI EU 54

| h x b mm | a mm | Peso kg/m |
|----------|------|-----------|
| 30 x 33  | 5    | 4,27      |
| 40 x 35  | 5    | 4,88      |
| 50 x 38  | 5    | 5,59      |
| 65 x 42  | 5,5  | 7,09      |

## "Elle" a spigoli vivi

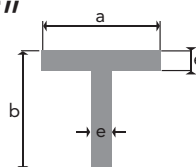
EURONORM 10025  
UNI EU 57



| a x b x e mm  | Peso kg/m | a x b x e mm  | Peso kg/m |
|---------------|-----------|---------------|-----------|
| 20 x 12 x 4   | 0,88      | 35 x 20 x 5,5 | 2,14      |
| 25 x 15 x 4,5 | 1,25      | 40 x 22 x 6   | 2,64      |
| 30 x 17,5 x 5 | 1,67      | 45 x 30 x 6,5 | 3,50      |

## Profilati a "T" spigoli vivi

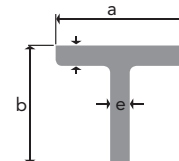
EURONORM 10025  
UNI EU 5681-73



| a x b x e mm  | Peso kg/m | a x b x e mm  | Peso kg/m |
|---------------|-----------|---------------|-----------|
| 20 x 20 x 4   | 1,13      | 45 x 45 x 6,5 | 4,26      |
| 25 x 25 x 4,5 | 1,61      | 50 x 50 x 7   | 5,11      |
| 30 x 30 x 5   | 2,16      | 60 x 60 x 8   | 7,03      |
| 35 x 35 x 5,5 | 2,78      | 70 x 70 x 9   | 9,26      |
| 40 x 40 x 6   | 3,49      | 80 x 80 x 10  | 11,90     |

## Profilati a "T" spigoli tondi

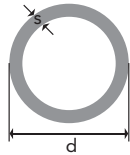
EURONORM 10025  
UNI EU 55



| a x b x e mm | Peso kg/m | a x b x e mm   | Peso kg/m |
|--------------|-----------|----------------|-----------|
| 60 x 60 x 7  | 6,23      | 100 x 100 x 11 | 16,40     |
| 70 x 70 x 8  | 8,32      | 120 x 120 x 13 | 23,20     |
| 80 x 80 x 9  | 10,70     |                |           |

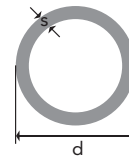
# TUBOLARI DI FORMA

## TUBI "CARPENTERIA" ELETTRISALDATI



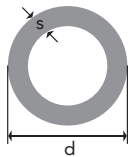
| Diametro in pollici | Diametro esterno mm | Spessore mm | Peso kg/m. |
|---------------------|---------------------|-------------|------------|
| 3/8"                | 16,75               | 2           | 0,73       |
| 1/2"                | 21,25               | 2,2         | 1,03       |
| 3/4"                | 26,75               | 2,35        | 1,49       |
| 1"                  | 33,3                | 2,60        | 2,02       |
| 1" 1/4              | 42,25               | 3           | 2,89       |
| 1" 1/2              | 48,25               | 3           | 3,33       |
| 2"                  | 60,30               | 3           | 4,22       |
| 2" 1/2              | 76,10               | 3           | 5,40       |
| 3"                  | 88,90               | 3           | 6,36       |
| 3" 1/2              | 101,60              | 3           | 7,32       |
| 4"                  | 114,30              | 3           | 8,21       |

## TUBI TONDI SALDATI A NASTRO CALDO



| Dimen. mm | Spess. mm | Peso kg/m | Dimen. mm | Spess. mm | Peso kg/m | Dimen. mm | Spess. mm | Peso kg/m | Dimen. mm | Spess. mm | Peso kg/m |      |
|-----------|-----------|-----------|-----------|-----------|-----------|-----------|-----------|-----------|-----------|-----------|-----------|------|
| 14        | 1         | 0,32      | 32        | 1         | 0,75      | 52        | 1,5       | 1,86      | 80        | 1,5       | 2,90      |      |
|           | 1,5       | 0,46      |           | 1,5       | 1,12      |           | 2         | 2,45      |           | 2         | 3,85      |      |
| 16        | 1         | 0,37      | 2         | 1,47      |           | 3         | 3,63      |           | 3         |           | 5,70      |      |
|           | 1,5       | 0,54      | 35        | 1,5       | 1,23      | 55        | 1,5       | 1,97      | 4         |           | 7,50      |      |
| 18        | 1         | 0,41      | 2         | 1,62      |           | 2         | 2,60      |           | 83        | 1,5       | 3,01      |      |
|           | 1,5       | 0,60      |           | 3         | 2,37      |           | 3         | 3,85      |           | 2         | 3,99      |      |
| 20        | 1         | 0,46      | 40        | 1,5       | 1,41      | 57        | 1,5       | 2,04      |           | 3         | 5,92      |      |
|           | 1,5       | 0,68      |           | 2         | 1,86      |           | 2         | 2,69      |           | 4         | 7,8       |      |
|           | 2         | 0,88      |           | 3         | 2,72      |           | 3         | 3,97      |           | 89        | 1,5       | 3,27 |
| 22        | 1         | 0,51      | 42        | 1,5       | 1,48      | 60        | 1,5       | 2,15      |           | 2         | 4,26      |      |
|           | 1,5       | 0,75      |           | 2         | 1,96      |           | 2         | 2,84      |           | 3         | 8,7       |      |
|           | 2         | 0,98      |           | 3         | 2,87      |           | 3         | 4,21      |           | 4         | 8,38      |      |
| 25        | 1         | 0,59      | 45        | 1,5       | 1,60      |           | 4         | 5,52      |           | 102       | 2         | 4,90 |
|           | 1,5       | 0,86      |           | 2         | 2,11      | 70        | 1,5       | 2,52      |           | 3         | 7,27      |      |
|           | 2         | 1,13      |           | 3         | 3,09      |           | 2         | 3,33      |           | 4         | 9,67      |      |
| 28        | 1         | 0,65      | 48        | 1,5       | 1,71      |           | 3         | 4,92      |           | 108       | 2         | 5,23 |
|           | 1,5       | 0,97      |           | 2         | 2,25      |           | 4         | 6,5       |           | 3         | 7,77      |      |
|           | 2         | 1,28      |           | 3         | 3,31      | 76        | 1,5       | 2,74      |           | 4         | 10,26     |      |
| 30        | 1         | 0,70      | 50        | 1,5       | 1,78      |           | 2         | 3,62      |           | 121       | 2         | 5,87 |
|           | 1,5       | 1,05      |           | 2         | 2,35      |           | 3         | 5,36      |           | 3         | 8,73      |      |
|           | 2         | 1,37      |           | 3         | 4,01      |           | 4         | 7,3       |           | 4         | 11,54     |      |
|           | 3         | 2,00      |           |           |           |           |           |           |           |           |           |      |

## TUBI TONDI ELETTRISALDATI GROSSO SPESSORE



| Spessore | Diametro |       |       |       |       |       |       |       |       |   |
|----------|----------|-------|-------|-------|-------|-------|-------|-------|-------|---|
|          | 2,5      | 3     | 4     | 5     | 6     | 7     | 8     | 9     | 10    |   |
| 89       | -        | -     | 8,38  | 10,36 | 12,29 | 14,17 | 15,99 | -     | -     | - |
| 102      | -        | -     | 9,67  | 11,96 | 14,37 | 16,41 | 18,56 | -     | -     | - |
| 108      | -        | -     | 10,26 | 12,70 | 15,09 | -     | -     | -     | -     | - |
| 114      | -        | -     | 10,85 | 13,44 | 15,99 | 18,49 | 20,93 | -     | -     | - |
| 127      | 7,68     | 9,17  | 12,13 | 15,04 | 17,90 | 20,74 | 23,50 | -     | -     | - |
| 133      | 8,05     | 9,62  | 12,73 | 15,78 | 18,79 | 21,77 | 24,68 | -     | -     | - |
| 139,7    | 8,46     | 10,11 | 13,39 | 16,61 | 19,78 | 22,93 | 26,00 | -     | -     | - |
| 152      | -        | 11,02 | 14,60 | 18,13 | 21,60 | 25,00 | 28,44 | -     | -     | - |
| 159      | -        | 11,54 | 15,29 | 18,99 | 22,64 | 26,24 | 29,82 | -     | -     | - |
| 168      | -        | 12,21 | 16,18 | 20,10 | 23,97 | 27,29 | 31,57 | -     | -     | - |
| 177,8    | -        | 12,94 | 17,16 | 21,33 | 25,45 | 29,52 | 33,54 | -     | -     | - |
| 193,7    | -        | 13,98 | 18,55 | 23,06 | 27,52 | 31,94 | 36,30 | -     | -     | - |
| 219      | -        | 15,98 | 21,21 | 26,39 | 31,06 | 39,59 | 41,61 | 46,63 | 51,57 | - |
| 244,5    | -        | -     | 23,75 | 29,57 | 35,33 | 41,05 | 46,71 | 52,33 | 57,90 | - |
| 273      | -        | -     | 26,54 | 33,05 | 39,55 | 45,97 | 52,34 | 58,67 | 64,94 | - |
| 323      | -        | -     | 31,56 | 39,92 | 46,30 | 54,70 | 62,32 | 69,89 | 77,41 | - |
| 339,7    | -        | -     | 33,15 | 41,32 | 49,44 | 57,50 | 65,52 | 73,49 | 81,41 | - |
| 335,6    | -        | -     | 34,72 | 43,28 | 51,79 | 60,25 | 68,86 | 77,02 | 85,33 | - |
| 406,4    | -        | -     | 39,74 | 49,55 | 59,32 | 69,03 | 78,70 | 88,31 | 97,88 | - |

## Nere-Lucide-Decapate

| Spessore mm | Peso kg/mq | Dimensioni in millimetri |             |             |             |             |             |
|-------------|------------|--------------------------|-------------|-------------|-------------|-------------|-------------|
|             |            | 1000 x 2000              | 1250 x 2500 | 1500 x 3000 | 1500 x 6000 | 2000 x 6000 | 2500 x 6000 |
|             |            | 2 mq                     | 3,1 mq      | 4,5 mq      | 9 mq        | 12 mq       |             |
| Peso in kg  |            |                          |             |             |             |             |             |
| 8/10        | 6,28       | 12,6                     | 19,6        | 28          | -           | -           | -           |
| 10/10       | 7,85       | 15,7                     | 24,5        | 35          | -           | -           | -           |
| 12/10       | 9,42       | 18,8                     | 29,5        | 42          | -           | -           | -           |
| 15/10       | 11,8       | 23,6                     | 36,7        | 53          | -           | -           | -           |
| 20/10       | 15,7       | 31,4                     | 49          | 71          | -           | -           | -           |
| 25/10       | 19,6       | 39,3                     | 61          | 88          | -           | -           | -           |
| 30/10       | 23,6       | 47,1                     | 73          | 106         | 212,4       | 282,6       | 354         |
| 4           | 31,4       | 62,8                     | 98          | 141         | 282,6       | 377         | 471         |
| 5           | 39,3       | 78,5                     | 123         | 176         | 352         | 472         | 589         |
| 6           | 47,1       | 94,2                     | 147         | 212         | 424         | 565         | 706         |
| 8           | 62,8       | 126                      | 196         | 282         | 564         | 754         | 942         |
| 10          | 78,5       | 157                      | 245         | 353         | 706         | 942         | 1178        |
| 12          | 94,2       | 188                      | 294         | 424         | 948         | 1130        | 1413        |
| 15          | 117,8      | 236                      | 368         | 530         | 1060        | 1413        | 1766        |
| 20          | 157        | 314                      | 491         | 707         | 1413        | 1884        | 2355        |
| 25          | 196        | 393                      | 613         | 833         | 1766        | 2355        | 2944        |
| 30          | 236        | 471                      | 736         | 1060        | 2120        | 2826        | 3533        |

## Zincate

| Spessore mm | Peso kg/mq | Dimensioni in millimetri |             |             |
|-------------|------------|--------------------------|-------------|-------------|
|             |            | 1000 x 2000              | 1250 x 2500 | 1500 x 3000 |
|             |            | Peso in kg               |             |             |
| 5/10        | 4,30       | 8,60                     | 13,44       | 19,35       |
| 6/10        | 5,10       | 10,20                    | 15,94       | 22,95       |
| 8/10        | 6,65       | 13,30                    | 20,78       | 29,93       |
| 10/10       | 8,25       | 16,50                    | 25,78       | 37,13       |
| 12/10       | 9,90       | 19,80                    | 30,94       | 44,55       |
| 15/10       | 12,15      | 24,30                    | 37,97       | 54,68       |
| 20/10       | 16,10      | 32,30                    | 50,31       | 72,45       |
| 25/10       | 20,05      | 40,10                    | 62,66       | 90,23       |
| 30/10       | 23,95      | 47,90                    | 74,84       | 107,80      |

## LAMIERE

### Striate

| Spessore mm | Peso kg/mq | Dimensioni in millimetri |             |             |            |
|-------------|------------|--------------------------|-------------|-------------|------------|
|             |            | 1000 x 2000              | 1250 x 2500 | 1500 x 3000 | Peso in kg |
| 3           | 28,6       | 57,2                     | 89,4        | 128,7       |            |
| 4           | 36,5       | 73,0                     | 114,0       | 164,3       |            |
| 5           | 44,3       | 88,6                     | 138,5       | 199,4       |            |
| 6           | 52,1       | 104,2                    | 163,0       | 234,5       |            |
| 8           | 67,8       | 135,6                    | 211,9       | 305,1       |            |
| 10          | 83,6       | 167,2                    | 261,2       | 376,2       |            |
| 12          | 99,1       | 198,2                    | 309,7       | 446,0       |            |

### Bugmate

| Spessore mm | Peso kg/mq | Dimensioni in millimetri |             |             |            |
|-------------|------------|--------------------------|-------------|-------------|------------|
|             |            | 1000 x 2000              | 1250 x 2500 | 1500 x 3000 | Peso in kg |
| 3           | 26,05      | 52,1                     | 81,1        | 117,0       |            |
| 4           | 33,95      | 67,9                     | 106,0       | 153,0       |            |
| 5           | 41,75      | 83,5                     | 130         | 187,6       |            |
| 6           | 49,6       | 99,2                     | 154         | 223         |            |
| 8           | 65,3       | 130,6                    | 204         | 284         |            |
| 10          | 81,1       | 162,2                    | 250         | 365         |            |